



Reference: 022067

May 20, 2024

Ralph Emerson
Garberville Sanitary District
919 Redwood Drive,
Garberville, CA 95542

Subject: Garberville Tanks Replacement Project – Addendum #1

To All Plan Holders

The following addendum is hereby made a part of the Contract Documents for the subject project, as fully and completely as if the same were set forth therein. This Addendum #1 consists of **11** pages.

Contract Documents

Pre-Bid Meeting Sign-In Sheet

1. The sign in sheet from the mandatory Pre-Bid Meeting held on May 15, 2024 at 10:00 am is included in Appendix 1 and shall be considered as part of this addendum.

Clarifications of Questions from the Pre-Bid Meeting

1. Will the contractor be responsible for hiring a biologist to conduct nesting bird surveys prior to construction?

The contractor is not responsible for hiring a biologist to conduct nesting bird surveys. Note that a nesting bird survey is not required if ground disturbing activities are completed outside of the nesting period (See MMRP Mitigation Measure BIO-1 in the Exhibits). If the contractor wishes to perform ground-disturbing activities during the nesting season, the contractor shall coordinate with GSD (who will hire a biologist) and shall comply with all necessary species-specific measures to prevent abandonment of active nests.

2. Will the contractor be responsible for hiring an engineer to design the concrete pad for the generator?

The contractor will be responsible for hiring an engineer to provide stamped drawings for the concrete pad and anchorage for the approved generator. The contractor shall submit foundation and anchorage design for approval.

3. Will the contractor be responsible for revegetation associated with mitigation for impacts to sensitive plant communities?

No, revegetation associated with sensitive plant community impact mitigation will be dealt with by GSD.



Ralph Emerson

Garberville Tanks Replacement Project – Addendum #1

May 20, 2024

Page 2

4. How soon can contractors expect to get paid after submittal of approved pay requests?

Once approved, partial payment requests are expected to be paid within 30 days.

5. Will the contractor be responsible for disposing of the Wallan Tank wood staves?

The wood staves from the demolition of Wallan Tank are to be transported to and unloaded by the contractor at the Wastewater Treatment Plant at 410 Bear Canyon Road. All other tank demolition items are to be disposed of by the contractor at an approved disposal site.

6. Is an electrical permit required for PG&E hookup?

Yes, the contractor shall obtain an electrical permit from Humboldt County, facilitate inspections, perform any required corrections, and obtain signed approval. See Item #3 below.

7. What is the estimated construction contract cost?

The engineer's estimate is \$3.7M dollars.

Changes and/or Clarifications to the Drawings and Specifications

Item #1. Drawing C5.4 has been revised to include an external hose bibb at the Alderpoint Pump Station. Revised drawings are included in Appendix 2.

Item #2. Drawings E12, E500, and E510C have been updated to reflect changes incorporating the issued PG&E construction drawings. Revised drawings are included in Appendix 2.

Item #2. A PG&E construction drawing for the electrical service at the Alderpoint Pump Station is included in Appendix 3.

Item #3. Specification Section 01 41 00. Add paragraph 1.2.D.2:

2. Contractor to obtain and comply with all necessary electrical permits from Humboldt County so that PG&E will energize the new service to the Alderpoint Pump Station. Contractor to facilitate inspections, perform any corrections required by the permitting agency and PG&E, and obtain signed approval.

Item #4. Specification Section 30 01 11. Add paragraph 3.4.H.1:

1. The maximum discharge rate for the Wallan Tank disinfection water into the sewer system manhole on Wallan Road is 100 gpm. The Contractor will be responsible for monitoring the discharge hose across Wallan Road from the wharf hydrant to the manhole and allow traffic to pass at least every 30 minutes.

Sincerely,

SHN



Jared O'Barr, PE
Principal Civil Engineer

- Appendices:
1. Prebid Meeting Sign-In Sheet
 2. Drawing Revisions
 3. PG&E Construction Drawing

**Prebid Meeting Sign
In Sheet**

1



GARBERVILLE SANITARY DISTRICT

P.O. BOX 211 • GARBERVILLE, CA 95542 • (707) 923-9566

Garberville Tanks Replacement Project

Mandatory Pre-Bid Walk-Thru Sign-In Sheet

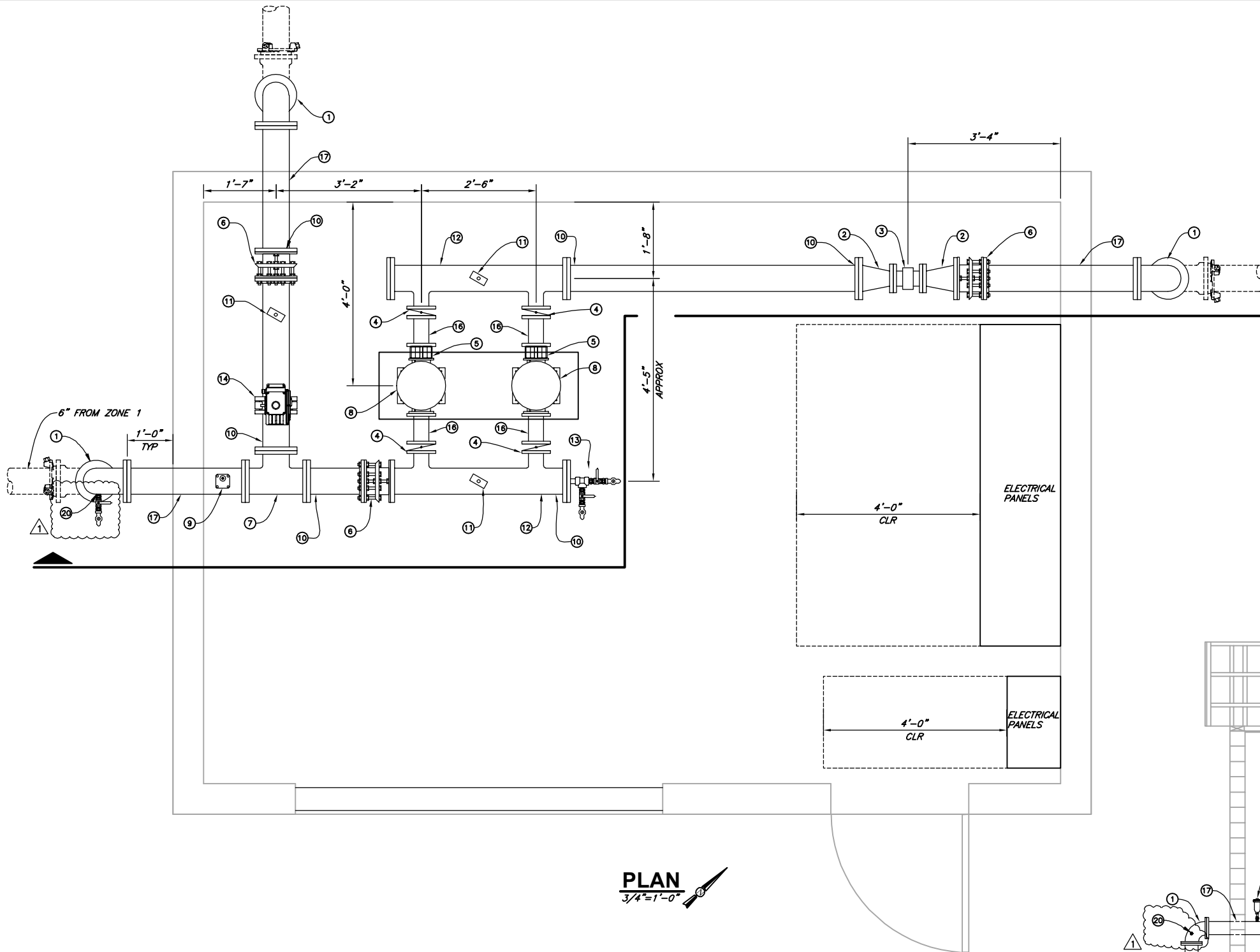
May 15, 2024

	Name	Company	Address	City	State	Zip	Phone	Email	General? Sub? Supplier?
1	Bryan Mann	Coastal Mountain Electric	14882 Lakeshore Dr	Clearlake	CA	95422	707-994-0437	bryan.coastalmep@gmail.com	Sub
2	Bob Downing	Bob Downing Elec	P.O. Box 650	Winton		95589	707-498-4852	bobdowning88@yahoo.com	Sub
3	BRETT VAN METER	VAN METER CON.	P.O. Box 575 GARB	GARBerville	CA	95542	707-273-0311	BRETT@VANMETERCONSTRUCTIONCO.COM	GEN.
4	Ken Wahlund	Wahlund Const	Box 6486	Eureka	CA	95502	707-498-1812	Ryan707-999-4112/ryan@wahlund.com	Gen
5	John Thomas	Mercer-Fraser Co.	P.O. Box 1006 Eureka, CA	Eureka	CA	95502	530-276-5539	jthomas@mercfraser.com	GC
6	ELISHA GREEN	MERCER-FRASER					(707)634-2900	egreen@mercfraser.com	
7									
8									
9									
10									
11									
12									
13									
14									
15									
16									
17									
18									

Drawing Revisions

2

SAVED: 5/20/2024 7:53 AM CNEWELL, PLOTTED: 5/20/2024 7:54 AM NEWELL, CHRIS
 P:\Eureka\2022\022067-GSD-Water\Draws\022067-ART-PUMP-STA-MECH.dwg



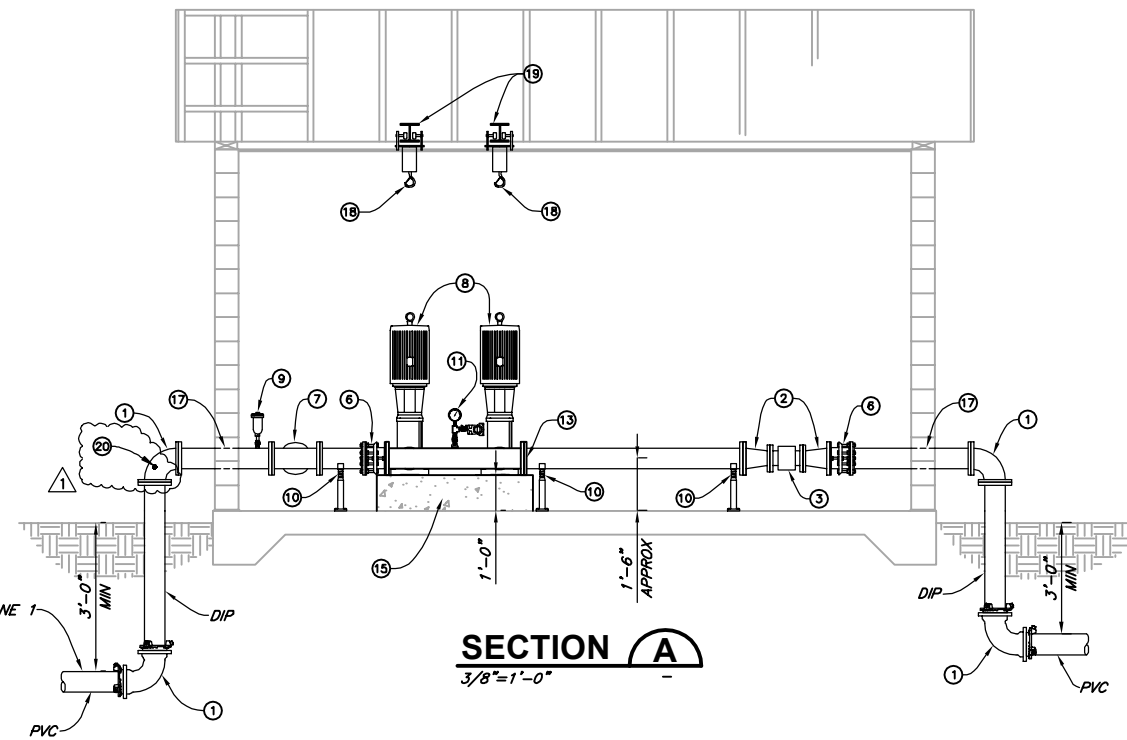
PLAN
 3/4"=1'-0"

KEY NOTES:

- ① 6" DIP EL
- ② 6"x3" DIP REDUCER
- ③ 3" MAG FLOW METER, SEE ELECTRICAL PLANS FOR DETAILS
- ④ 3" BUTTERFLY VALVE, LUG
- ⑤ 3" WAFER SILENT CHECK VALVE
- ⑥ 6" DISMANTLING JOINT
- ⑦ 6" DIP TEE
- ⑧ VERTICAL MULTI-STAGE PUMP
- ⑨ AIR RELEASE VALVE, SEE DET 4 ON SHT C8.5
- ⑩ PIPE SUPPORT, FLOOR, SEE DET 1 ON SHT C8.4
- ⑪ PRESSURE INSTRUMENTS, SEE ELECTRICAL AND CONTROLS PLANS FOR DETAILS. INCLUDE MECHANICAL GAUGE 0-100 PSI DET 6 SHT C8.5
- ⑫ FABRICATED STEEL OR DUCTILE IRON PIPE HEADER, FLANGED, SEE NOTE 5
- ⑬ 3/4" TEE WITH 3/4" SST BALL VALVES AND THREADED NIPPLES. 1/2" SAMPLE VALVE, SMOOTH OUTLET & 3/4" HOSE BIBB WITH THREADED OUTLET SEE DTL 5 SHT C8.5 FOR SIMILAR. PROVIDE FITTINGS AND NIPPLES.
- ⑭ 6" BUTTERFLY VALVE WITH ELECTRIC OPERATOR, 200PSI RATING MINIMUM, SEE NOTE 4 BELOW
- ⑮ EQUIPMENT PAD, SEE DET 5 ON SHT C8.4
- ⑯ 3" FLANGED SPOOL, 8" MIN
- ⑰ CMU WALL PIPE PENETRATION, SEE DET 4 ON SHT C8.4
- ⑱ 2 TON CHAIN HOIST WITH TROLLEY
- ⑲ HOIST BEAM, SEE STRUCTURAL PLANS
- ⑳ 3/4" HOSE BIBB WITH LOCKABLE LEAD-FREE STRAIGHT CURB STOP & 3/4" FACTORY TAP ON DIP ELBOW


NOTES:

1. ALL PIPING, VALVES, FITTINGS, INSTRUMENTATION AND APPURTENANCES SHALL HAVE A 200 PSI PRESSURE RATING.
2. ALL DIMENSIONS TO PIPE OR EQUIPMENT CENTERLINE UNLESS OTHERWISE NOTED.
3. CONTRACTOR SHALL COORDINATE FLANGE CLASS OF CONNECTED EQUIPMENT, VALVES, AND PIPING TO ENSURE COMPATIBILITY AND PRESSURE RATING.
4. MOTOR OPERATED VALVE SHALL BE CLOSED WHENEVER A PUMP CYCLES ON, AND OPEN AT ALL OTHER TIMES. THE INTENT IS FOR ZONE 1A/1B TO BE SUPPLIED FROM ZONE 1 EXCEPT WHEN PUMPS ARE RUNNING. WHEN PUMPS ARE RUNNING, ZONE 1A/1B WILL BE SUPPLIED FROM ZONE 4 THROUGH THE 4" AND 6" PRYS LOCATED IN THE EXTERNAL VAULT ADJACENT TO THE PUMP BUILDING.
5. IF CONTRACTOR UTILIZES STEEL HEADER OPTION, USE DIELECTRIC FLANGE ISOLATION KIT WHEN TRANSITIONING BETWEEN DISSIMILAR PIPING MATERIAL SUCH AS STEEL TO DUCTILE IRON. SEE DET 3 SHT C8.4.

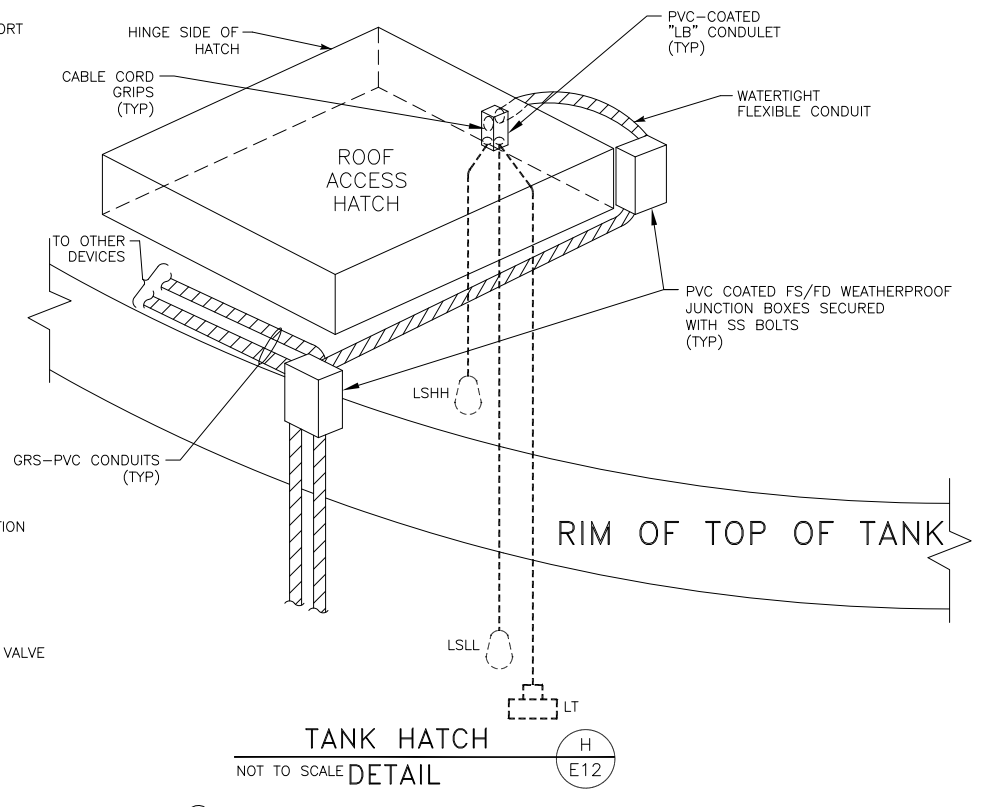
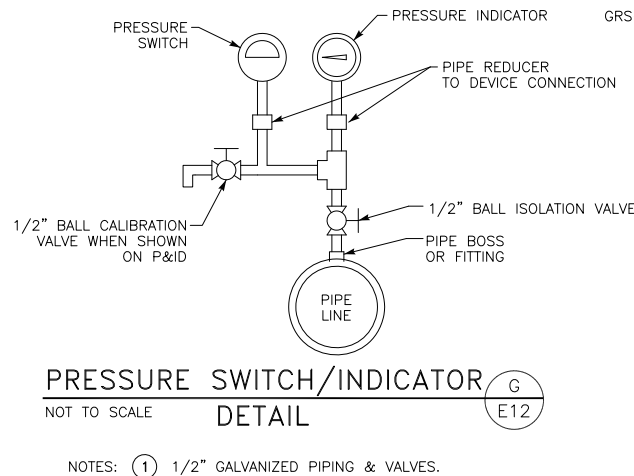
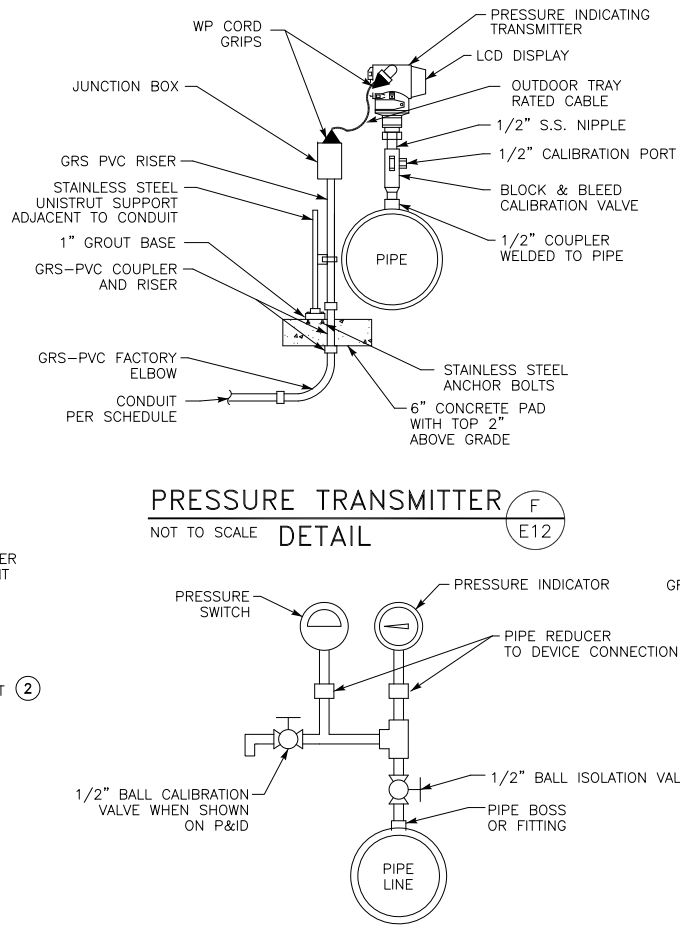
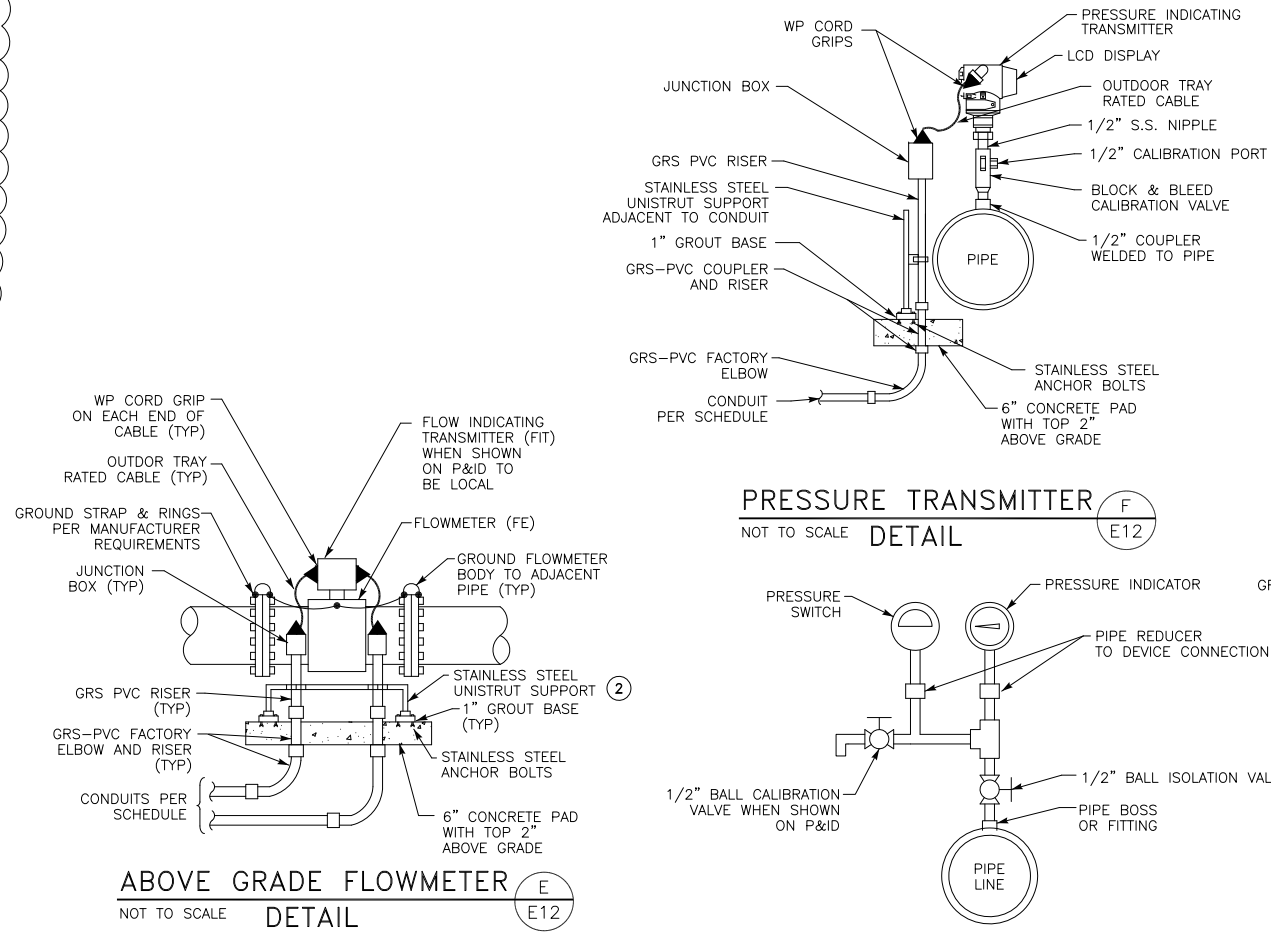
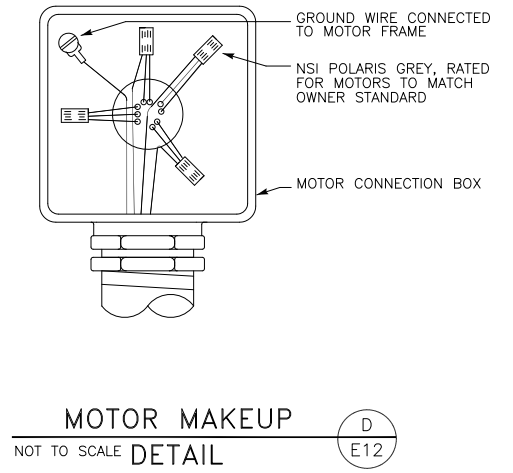
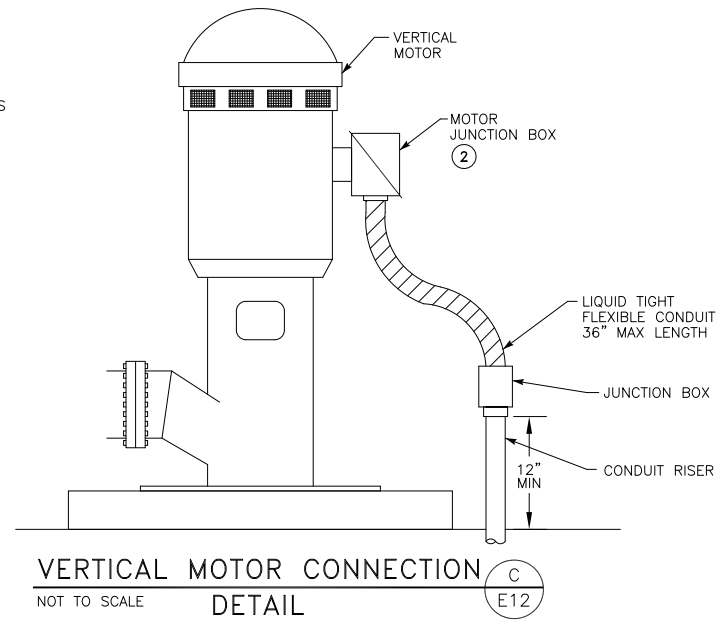
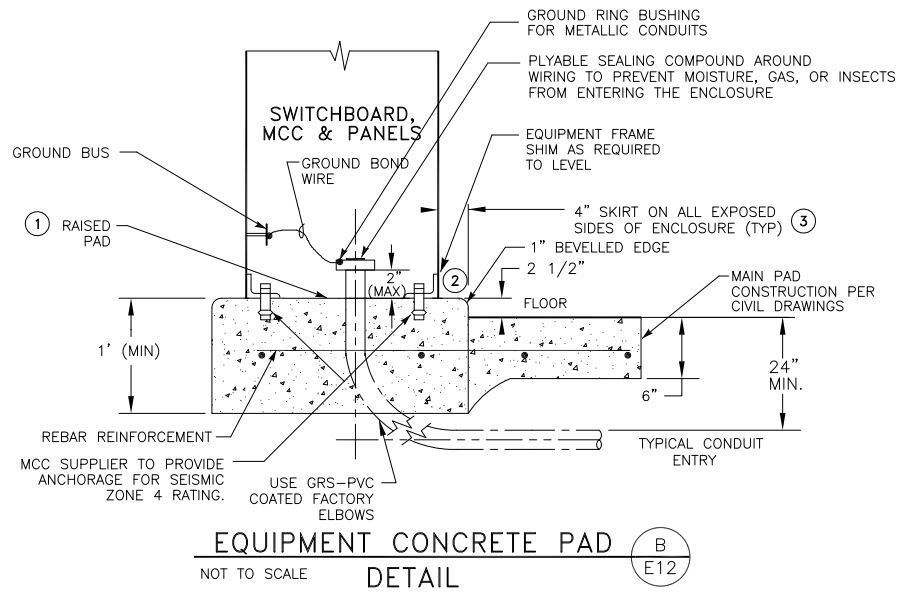
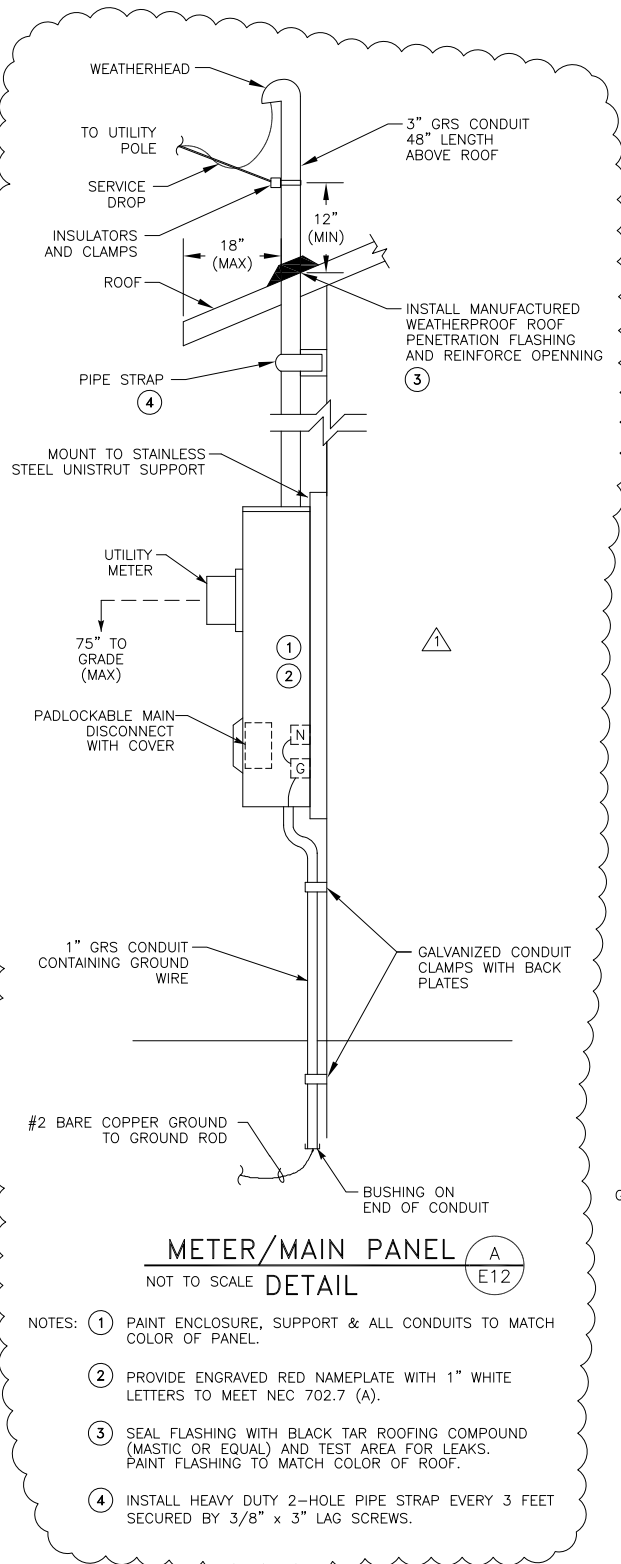


SECTION A
 3/8"=1'-0"

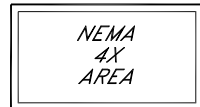
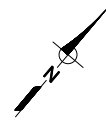


 812 W. WABASH AVE. FULLERTON, CA 92701 WWW.WSP-CA.COM 707-441-8855		VERIFY SCALES BAR IS ONE INCH ON ORIGINAL DRAWING IF NOT ONE INCH ON SCALES ACCORDINGLY
DSGN JSO DR CDN/JWF CHK PEG APVD	05/15/2024 DATE	JSO BY
GARBERVILLE SANITARY DISTRICT GARBERVILLE TANKS REPLACEMENT PROJECT GARBERVILLE, CALIFORNIA ALDERPOINT PUMP STATION MECHANICAL PLAN		REVISION BID PHASE ADDENDUM
SHEET C5.4		PROJ. NO. 022067
DATE 04/2024		4/19/24

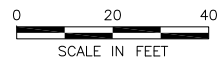
SAVED: 5/15/2024 2:31 PM ATEEM, PLOTTED: 5/15/2024 2:34 PM ZAK KWAN VOGLER
 Z:\ACADDWG\2022\22066\DWG\22066E012.dwg



VERIFY SCALES		BIB IS ONE INCH ON ORIGINAL DRAWING		0 IF NOT ONE INCH ON THIS SHEET, ADJUST SCALES ACCORDINGLY	
812 W. WABASH AVE. EUREKA, CA. 95501 WWW.SHN-ENGR.COM 707-441-8655		SHN			
DSGN	SMK	DR	ZKV	CHK	XML
GARBERVILLE SANITARY DISTRICT GARBERVILLE TANK REPLACEMENT PROJECT GARBERVILLE, CALIFORNIA		TYPICAL ELECTRICAL DETAILS NO.2			
APVD		BID PHASE	ADDENDUM 1	REVISION	BY
		5/15/2024			
		DATE			
		NO.			
SHEET	E12				
SEQ					
DATE	4/2024				
PROJ. NO.	022067				



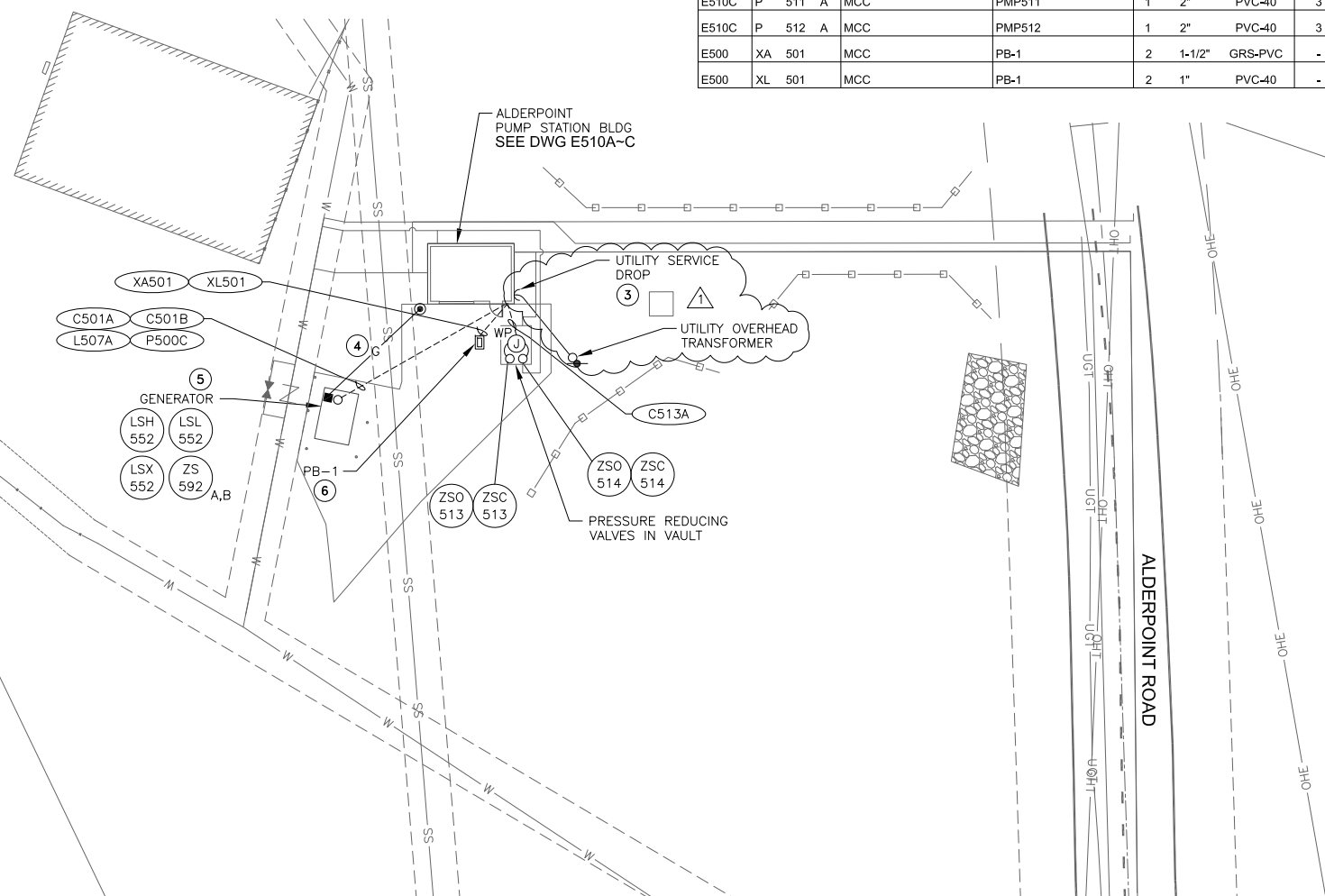
OUTSIDE BUILDING



CONDUIT & WIRE ROUTING SCHEDULE

REF DWG	CONDUIT NO.	FROM	TO	QTY	SIZE	TYPE	PWR QTY	SIZE	GND SIZE	CONTROL QTY	SIZE	SIGNAL QTY	SIZE	NOTES
E510C	A 561 A	MCC	PIT561 JB	1	1-1/2"	GRS-PVC	2	#14	#12	-	-	4	#16 TSPR	
E510C	A 562 A	PIT561 JB	PIT562 JB	1	1"	GRS-PVC	2	#14	#12	-	-	3	#16 TSPR	
E510C	A 563 A	PIT562 JB	PIT563	1	1"	GRS-PVC	2	#14	#12	-	-	1	#16 TSPR	
E510C	A 571 A	MCC	FIT571	1	1"	GRS-PVC	2	#14	#12	-	-	1	#16 TSPR	
E500	C 501 A	ATS	GENERATOR	1	1"	PVC-40	-	-	#12	6	#14	-	-	
E500	C 501 B	MCC	GENERATOR	1	1"	PVC-40	-	-	#12	10	#14	-	-	
E510C	C 501 C	MCC	ATS	1	1"	PVC-40	-	-	#12	8	#14	-	-	
E510C	C 511 A	MCC	PMP511	1	1"	PVC-40	-	-	#12	4	#14	-	-	
E510C	C 512 A	MCC	PMP512	1	1"	PVC-40	-	-	#12	4	#14	-	-	
E500	C 513 A	MCC	ZSO/ZSC513-4	1	1"	PVC-40	-	-	#12	12	#14	-	-	
E510C	C 521 A	MCC	MOV521	1	1"	PVC-40	-	-	#12	12	#14	-	-	
E510C	C 561 A	MCC	PSLL561 JB	1	1"	PVC-40	-	-	#12	16	#14	-	-	
E510C	C 562 A	PSLL561 JB	PSHH/LL562 JB	1	1"	PVC-40	-	-	#12	12	#14	-	-	
E510C	C 563 A	PSHH/LL562 JB	PSHH563	1	1"	PVC-40	-	-	#12	6	#14	-	-	
E510A	C 591 A	MCC	ZS591	1	3/4"	GRS	-	-	#12	4	#14	-	-	
E510A	D 510 A	MCC	ANTENNA	1	2"	GRS	-	-	#8	-	-	1	1/2" COAX	
E500	L 507 A	MCC	GEN BATT CHGR/HTR	1	1"	PVC-40	4	#10	#10	-	-	-	-	
E510A	L 508 A	MCC	EF SW/T-STAT	1	3/4"	GRS	2	#12	#12	-	-	-	-	
E510A	L 508 B	EF SW/T-STAT	EXHAUST FAN	1	3/4"	GRS	2	#12	#12	-	-	-	-	
E510C	L 512 A	MCC	MOV521	1	1"	PVC-40	2	#12	#12	-	-	-	-	
E510C	L 513 A	MCC	DISC/HVAC UNIT	1	1"	PVC-40	3	#10	#10	-	-	-	-	
E510C	P 500 A	UTILITY SERVICE DROP	METER/MAIN PANEL	1	3"	GRS	4	#4/0	-	-	-	-	-	PER PG&E
E510C	P 500 B	METER/MAIN PANEL	ATS	1	3"	PVC-40	3	#3/0	#3	-	-	-	-	
E510C	P 500 C	ATS	GENERATOR	1	3"	PVC-40	4	#3/0	#3	-	-	-	-	
E510C	P 500 D	ATS	MCC	1	3"	PVC-40	3	#3/0	#3	-	-	-	-	
E510C	P 511 A	MCC	PMP511	1	2"	PVC-40	3	#6	#8	-	-	-	-	VFD RATED CBL
E510C	P 512 A	MCC	PMP512	1	2"	PVC-40	3	#6	#8	-	-	-	-	VFD RATED CBL
E500	XA 501	MCC	PB-1	2	1-1/2"	GRS-PVC	-	-	-	-	-	-	-	PULL ROPE
E500	XL 501	MCC	PB-1	2	1"	PVC-40	-	-	-	-	-	-	-	PULL ROPE

- NOTES:
- UG CONDUITS PER DWG E11, DETAIL "B".
 - EXPOSED CONDUITS TRANSITIONS PER DWG E11, DETAIL "G".
 - UTILITY SERVICE DROP, CONDUIT AND GROUNDING SYSTEM TO BE PROVIDED AND INSTALLED BY CONTRACTOR PER UTILITY ENGINEERED DRAWINGS.
 - GROUND BONDS TO CONSIST OF #2 BARE COPPER WITH MINIMUM 30" COVER. INSTALL GROUND ROD HANDHOLE PER DWG E11, DETAIL "E". BOND GROUND BUS WITH UL APPROVED GROUND CLAMPS.
 - STUB OUT CONDUITS PER GENERATOR MANUFACTURER'S REQUIREMENTS.
 - INSTALL MINIMUM 13" x 24" PULL BOX PER DWG E11, DETAIL "H".



ALDERPOINT PUMP STATION ELECTRICAL SITE PLAN ①②

SAVED: 5/15/2024 2:30 PM ATEEM, PLOTTED: 5/15/2024 2:34 PM ZAK KWAN VOGLER
Z:\ACADDWG\2022\22066\DWG\22066E500.dwg



(916) 457-8144
© SEPTEMBER 2023
ATEEM ENGINEERING
ALL RIGHTS RESERVED



4/22/2024

VERIFY SCALES
BAG IS ONE INCH ON ORIGINAL DRAWING
0 IF NOT ONE INCH ON THIS SHEET, ADJUST SCALES ACCORDINGLY

812 W. WABASH AVE.
EUREKA, CA 95501
WWW.SHN-ENGR.COM
707-441-8655



DR	SMK	BY
CHK	ZKV	
APVD	XML	
NO.	1	REVISION
DATE	5/15/2024	
	BID PHASE ADDENDUM	

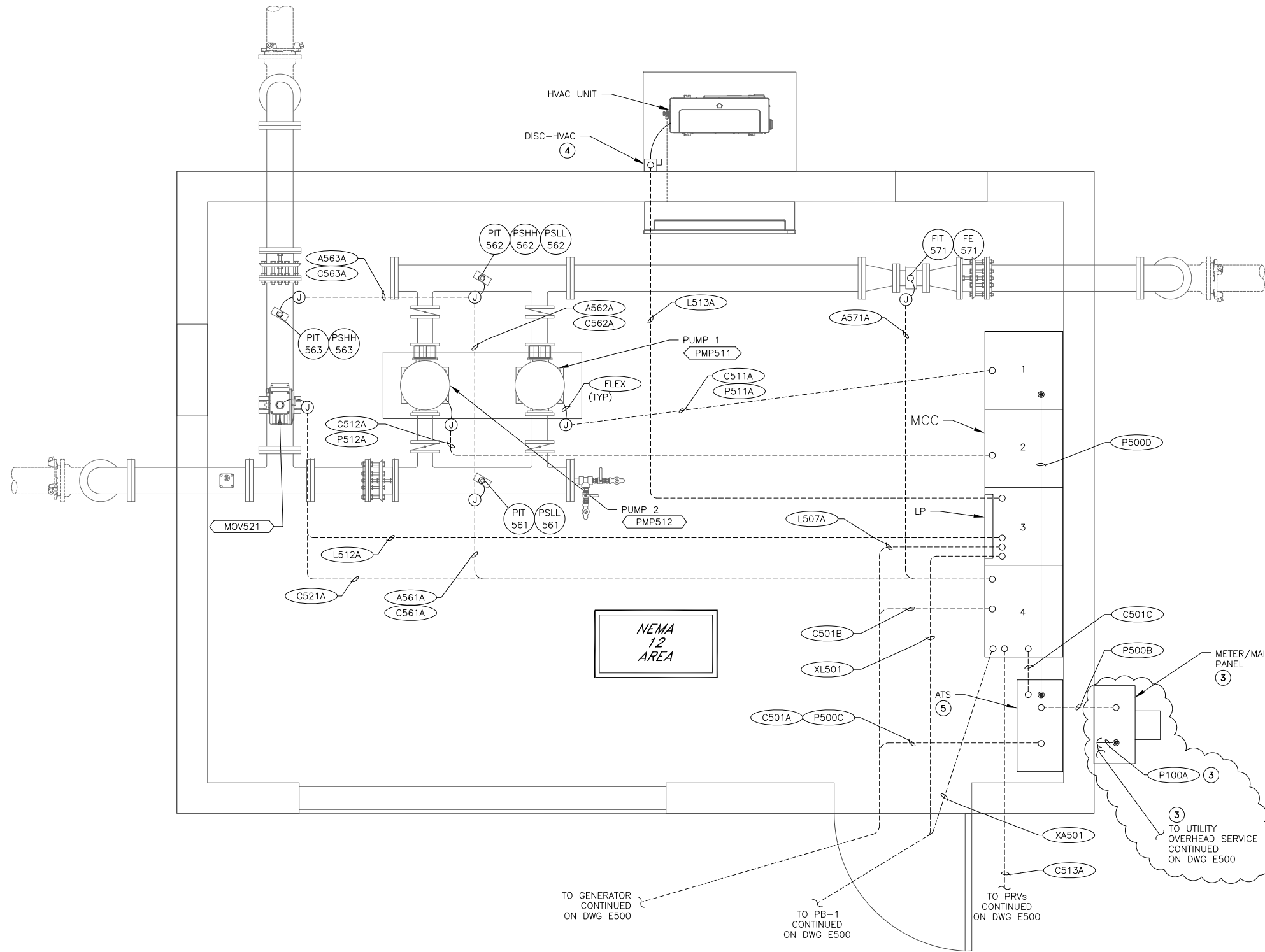
GARBERVILLE SANITARY DISTRICT
GARBERVILLE TANK REPLACEMENT PROJECT
GARBERVILLE, CALIFORNIA
ALDERPOINT PUMP STATION
ELECTRICAL SITE PLAN

SHEET
E500
SEQ
DATE 4/2024
PROJ. NO.
022067



NEMA
4X
AREA

OUTSIDE BUILDING
0 1 2
SCALE IN FEET



ALDERPOINT PUMP STATION BLDG ELECTRICAL POWER PLAN ①②

SCALE: 3/4" = 1'

- NOTES:
- ① UG CONDUITS PER DWG E11, DETAIL "B".
 - ② EXPOSED CONDUITS TRANSITIONS PER DWG E11, DETAIL "G".
 - ③ UTILITY OVERHEAD SERVICE DROP AND METER/MAIN PANEL PER DWG E12, DETAIL "A".
 - ④ INSTALL 30A NEMA 3R FUSED DISCONNECT SWITCH AND FUSES SIZED TO PROTECT EQUIPMENT PER DWG E13, DETAIL "E".
 - ⑤ ATS INSTALLATION PER DWG E13, DETAIL "E".

SAVED: 5/15/2024 2:30 PM ATEEM, PLOTTED: 5/15/2024 2:34 PM ZAK KWAN VOGLER
Z:\ACADDWG\2022\22067\DWG\22067E510C.dwg



(916) 457-8144

© SEPTEMBER 2023
ATEEM ENGINEERING
ALL RIGHTS RESERVED



4/22/2024

VERIFY SCALES
BAG IS ONE INCH ON ORIGINAL DRAWING
IF NOT ONE INCH ON THIS SHEET, ADJUST SCALES ACCORDINGLY

812 W. WABASH AVE.
EUREKA, CA 95501
WWW.SHN-ENGR.COM
707-441-8655



NO.	DATE	REVISION	SMK	BY
1	5/15/2024	BID PHASE ADDENDUM 1		

DSGN	SMK	DR	ZKV	CHK	XML	APVD

GARBERVILLE SANITARY DISTRICT
GARBERVILLE TANK REPLACEMENT PROJECT
GARBERVILLE, CALIFORNIA
ALDERPOINT PUMP STATION BLDG
ELECTRICAL POWER PLAN

SHEET	E510C
SEQ	
DATE	4/2024
PROJ. NO.	022067

**PG&E Construction
Drawing**

3

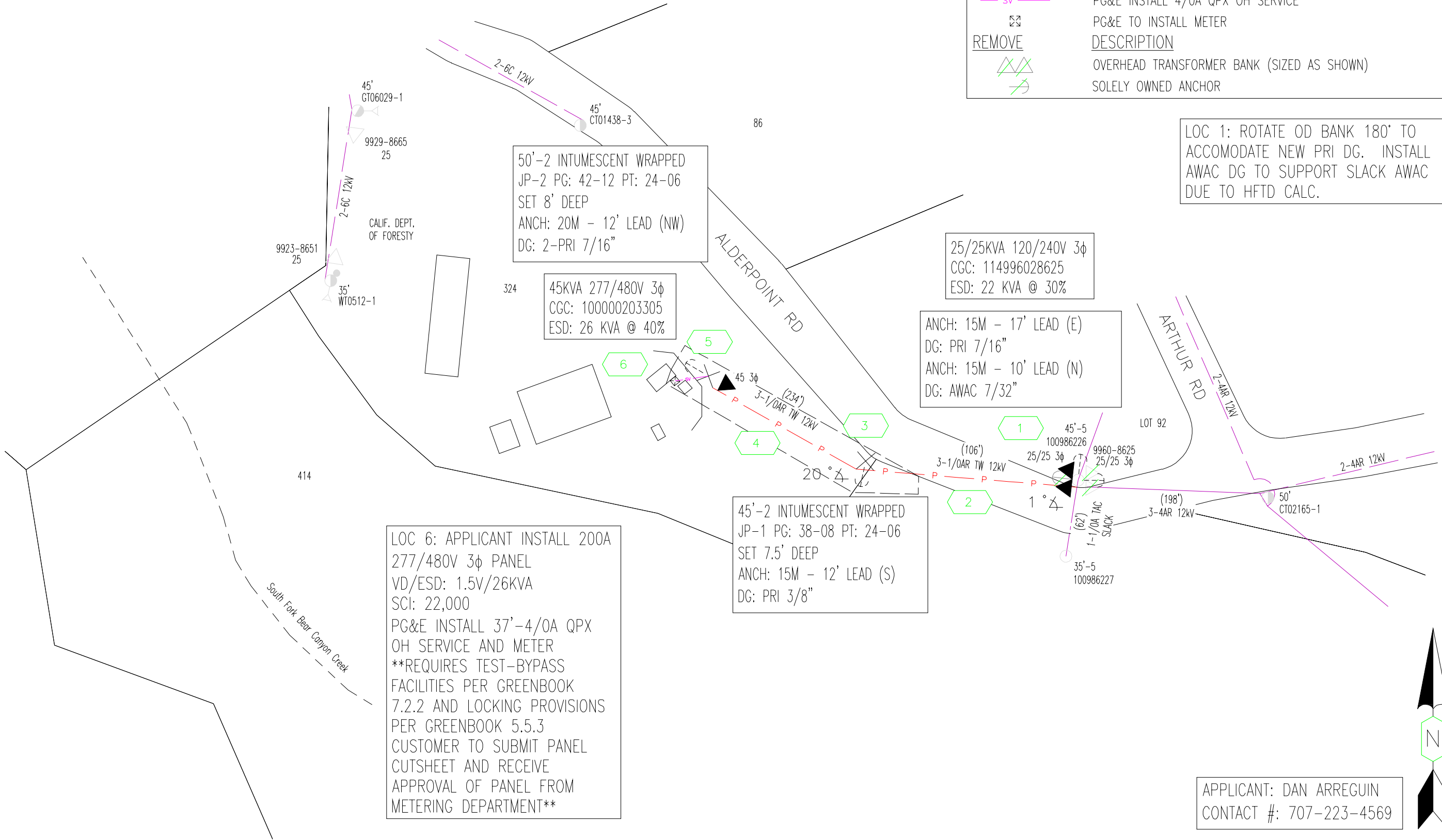
REQUIRED PERMITS

- COUNTY CITY
- TRAFFIC CONTROL

LAND DEPT.
ACQUIRE LAND RIGHTS

LEGEND

INSTALL	DESCRIPTION
	OVERHEAD TRANSFORMER (SIZED AS SHOWN)
	OVERHEAD TRANSFORMER BANK (SIZED AS SHOWN)
	NEW JOINT POLE
	PG&E INSTALL 3-1/OAR TW 12KV
	SOLELY OWNED ANCHOR
	PG&E INSTALL 4/OA QPX OH SERVICE
	PG&E TO INSTALL METER
REMOVE	DESCRIPTION
	OVERHEAD TRANSFORMER BANK (SIZED AS SHOWN)
	SOLELY OWNED ANCHOR



LOC 1: ROTATE OD BANK 180° TO ACCOMODATE NEW PRI DG. INSTALL AWAC DG TO SUPPORT SLACK AWAC DUE TO HFTD CALC.

APPLICANT: DAN ARREGUIN
CONTACT #: 707-223-4569

EST: LOUIE CALDWELL 707-273-9982		CONSTRUCTION SKETCH	
ADE: SHANE LOPER 707-382-2886		ALDERPOINT & ARTHUR RD	
SUPV: MARTIN NEPPER 530-228-4032		GARBERVILLE	
REP: STANLEY SHOEMAKER 707-296-8471		811 Know what's below. Call before you dig.	
PLNR: MUSIE TEFASILASSIE 707-843-2204		NO ENVIRONMENTAL ISSUES	
NOTIF: 127245868 JPA#: PG245053LM		GAS CONFLICT: NO	
SCALE: 1"=100'		NEAR LOC: N/A	
DATE: 3/7/2024		FIRE AREA: SRA-TIER 2	
PM: 35525718		EXEMPT EQUIP. INST.: YES	
SHEET: 1 OF 1 REV: 0		PRIMARY VOLTAGE: 12 kV VOLTAGE AREA: 2	
		LATITUDE: 40.1053 LONGITUDE: -123.7878	
		SOURCE SIDE DEVICE: 64351	
		SUB & CIRCUIT: GARBERVILLE 1101	
		DSGN SAG: LTRURAL RAPTOR ZONE: YES	
		LOADING AREA: LIGHT ARRESTER DIST: 2	
		CORROSION AREA: NON INSULATION DIST: C	

